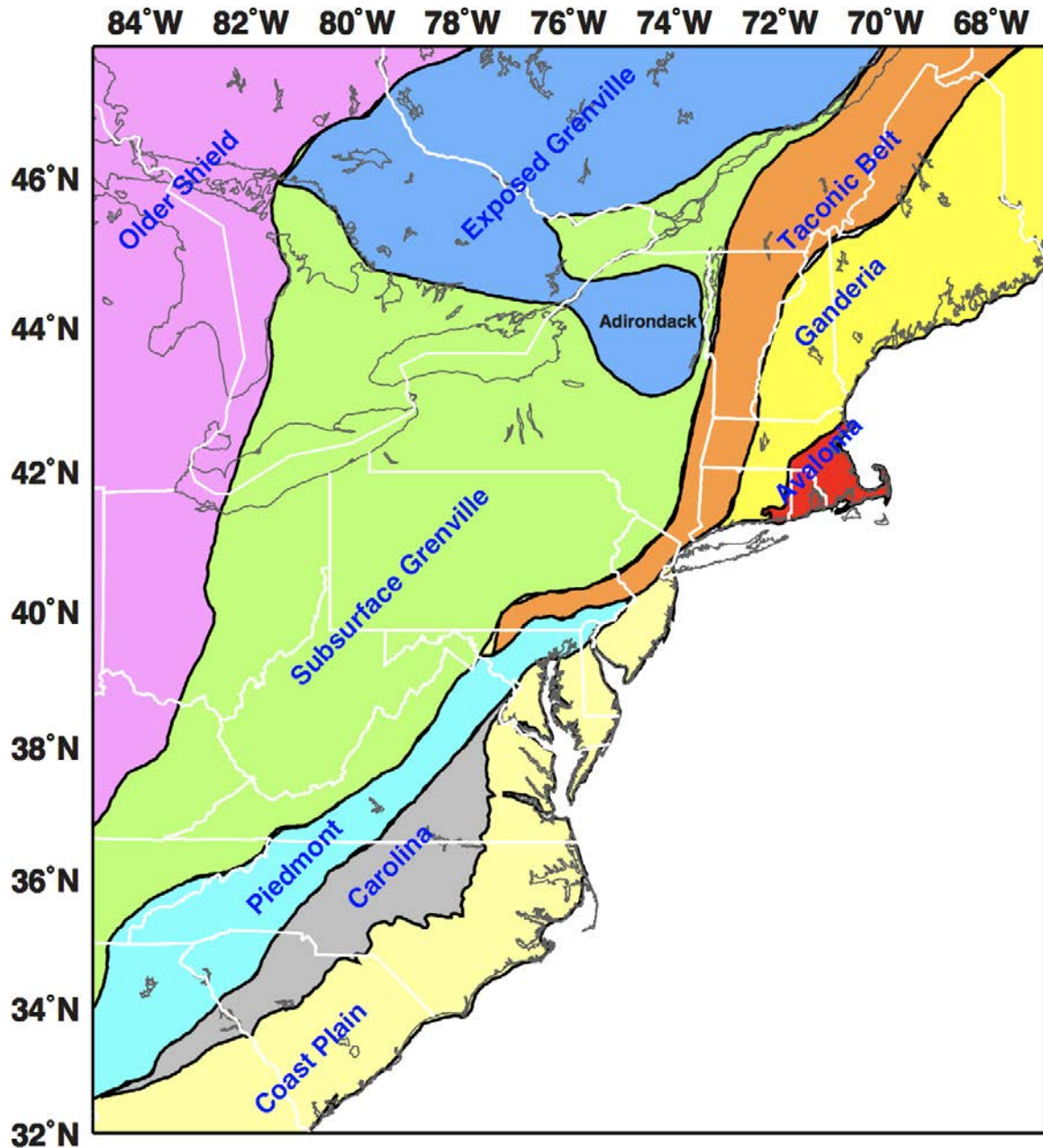


Correlation of three-dimensional variations of seismic Moho with tectonic terranes in eastern North America

Cong Li

Haiying Gao, Michael Williams
University of Massachusetts – Amherst

Vadim Levin, Rutgers University

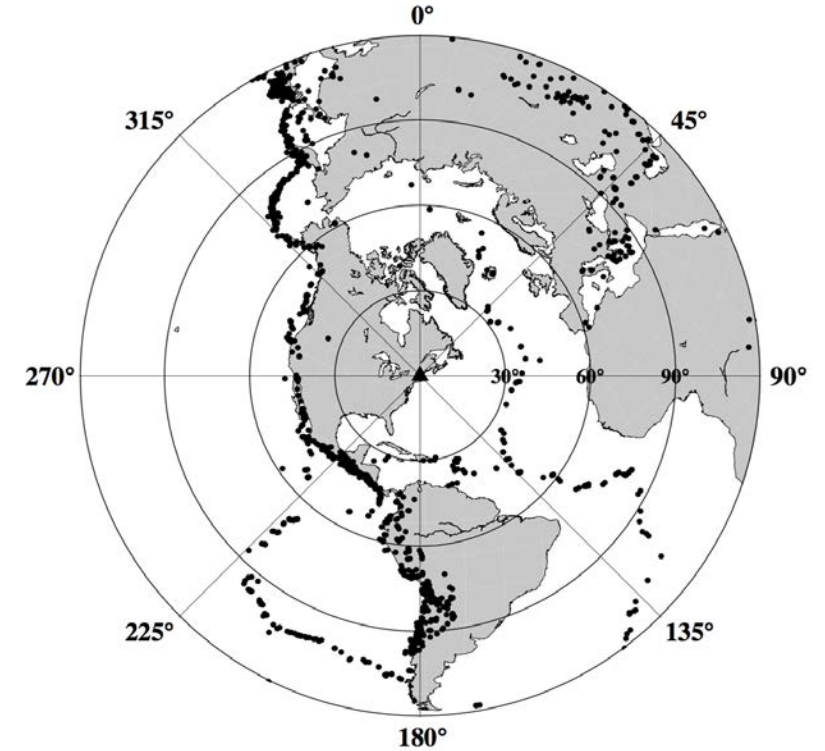
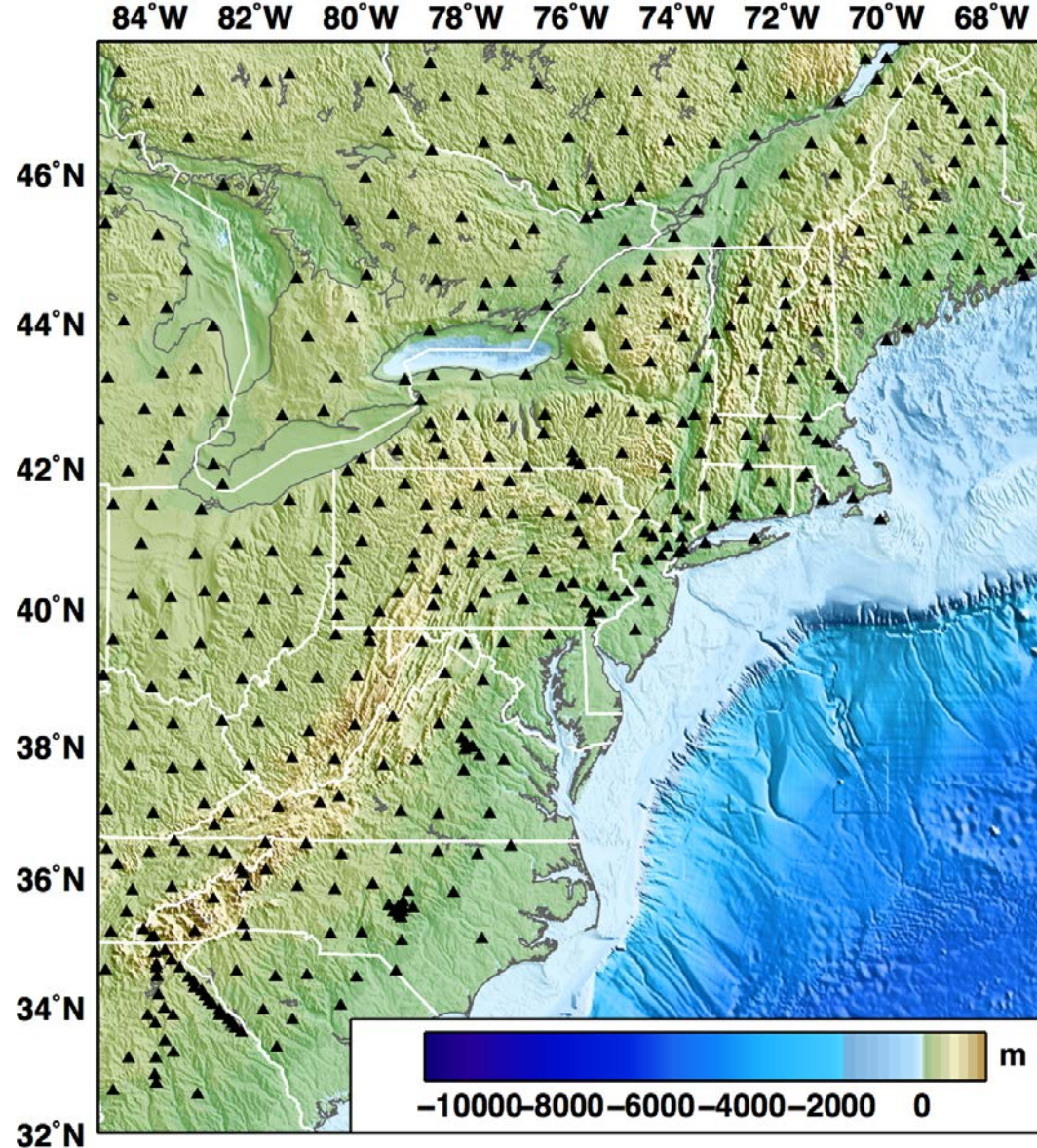


Motivations

- The subsurface distribution of the tectonic terranes is poorly constrained.
- To explore the correlations between the geologically-defined surface terranes and seismically-defined Moho variations.

Distribution of Stations and Events

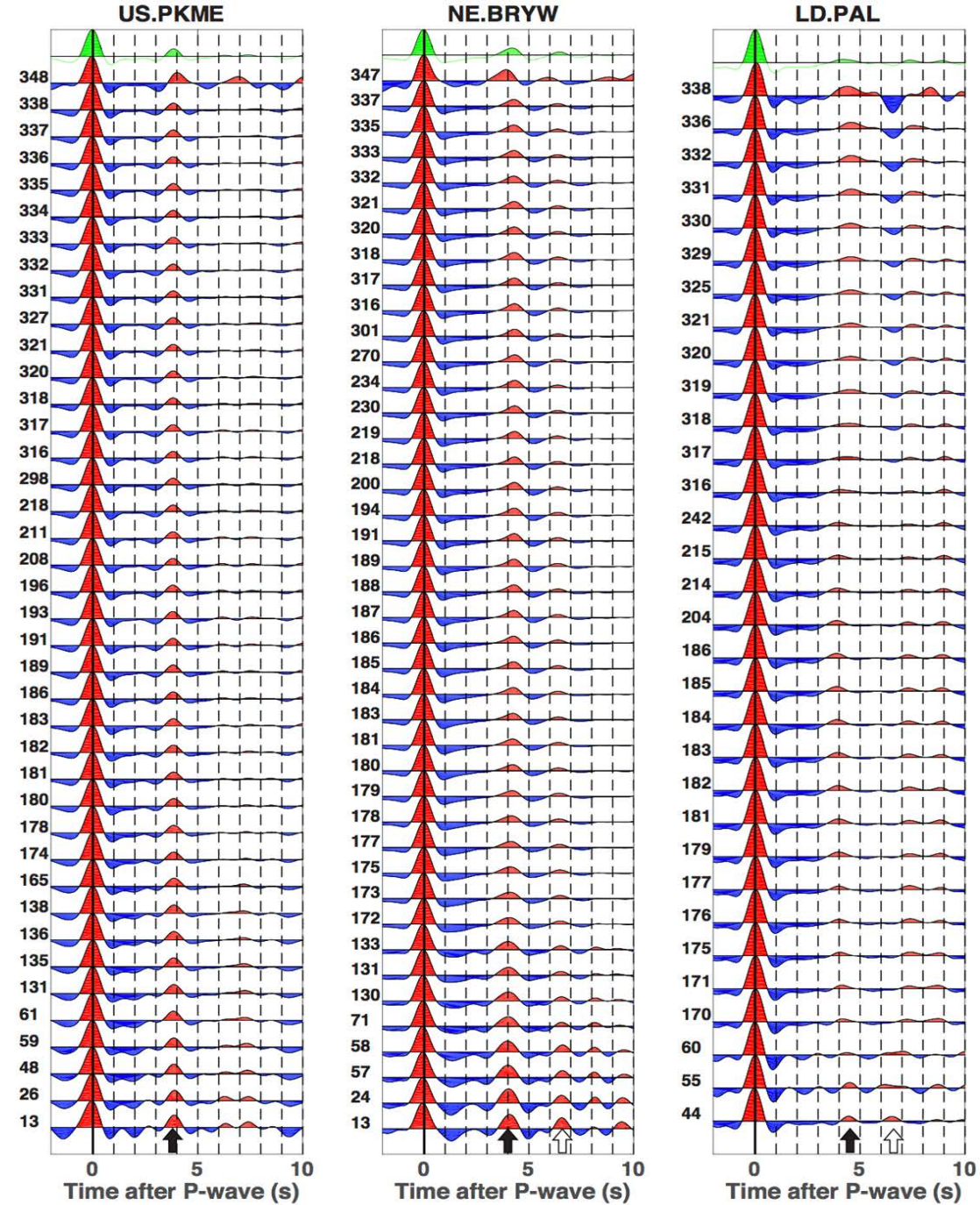
UMassAmherst



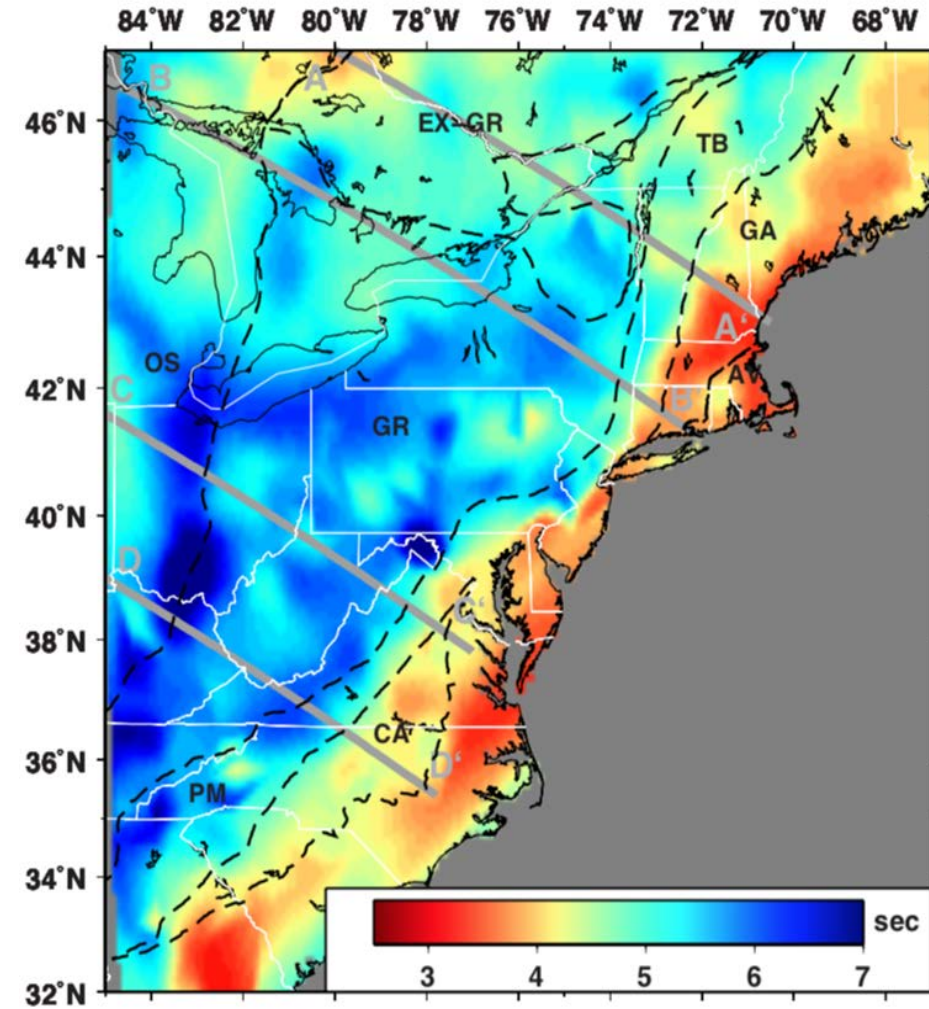
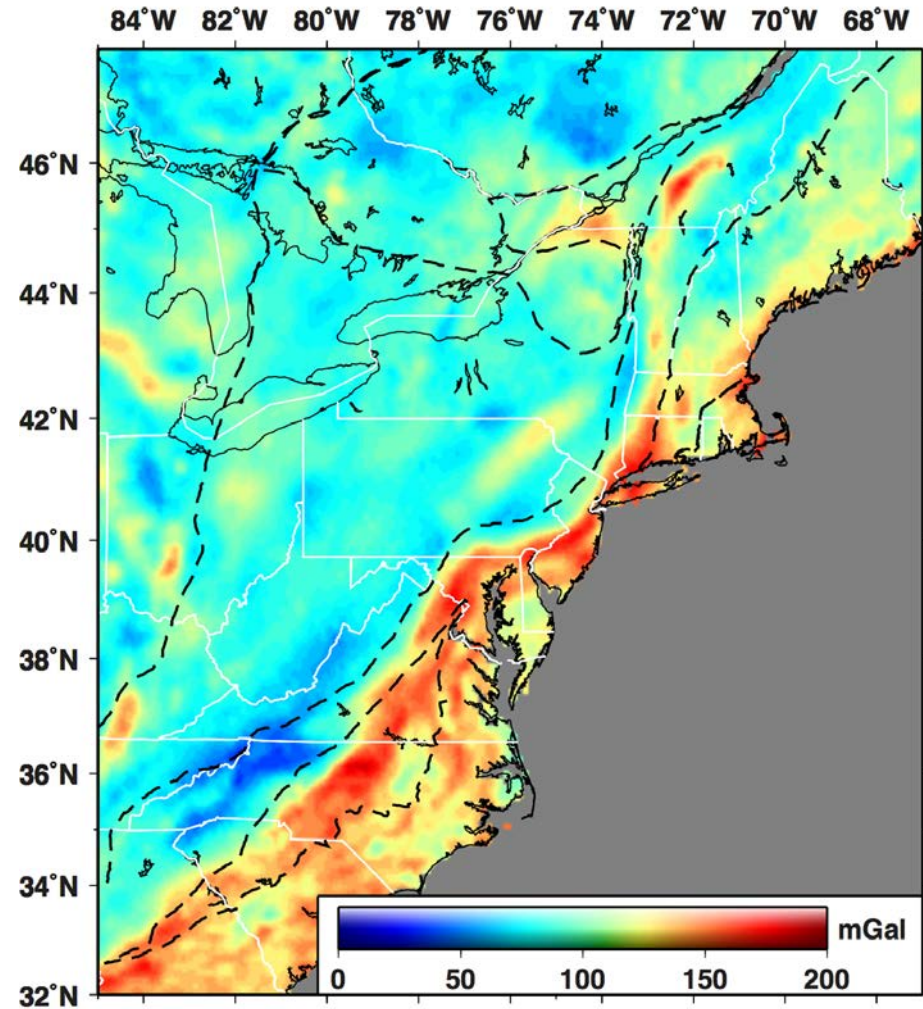
Earthquakes

- ❖ 1835 events
- ❖ 2010.1 – 2017.11
- ❖ Magnitude > 5.5
- ❖ Epicenter distance: 30° – 95°

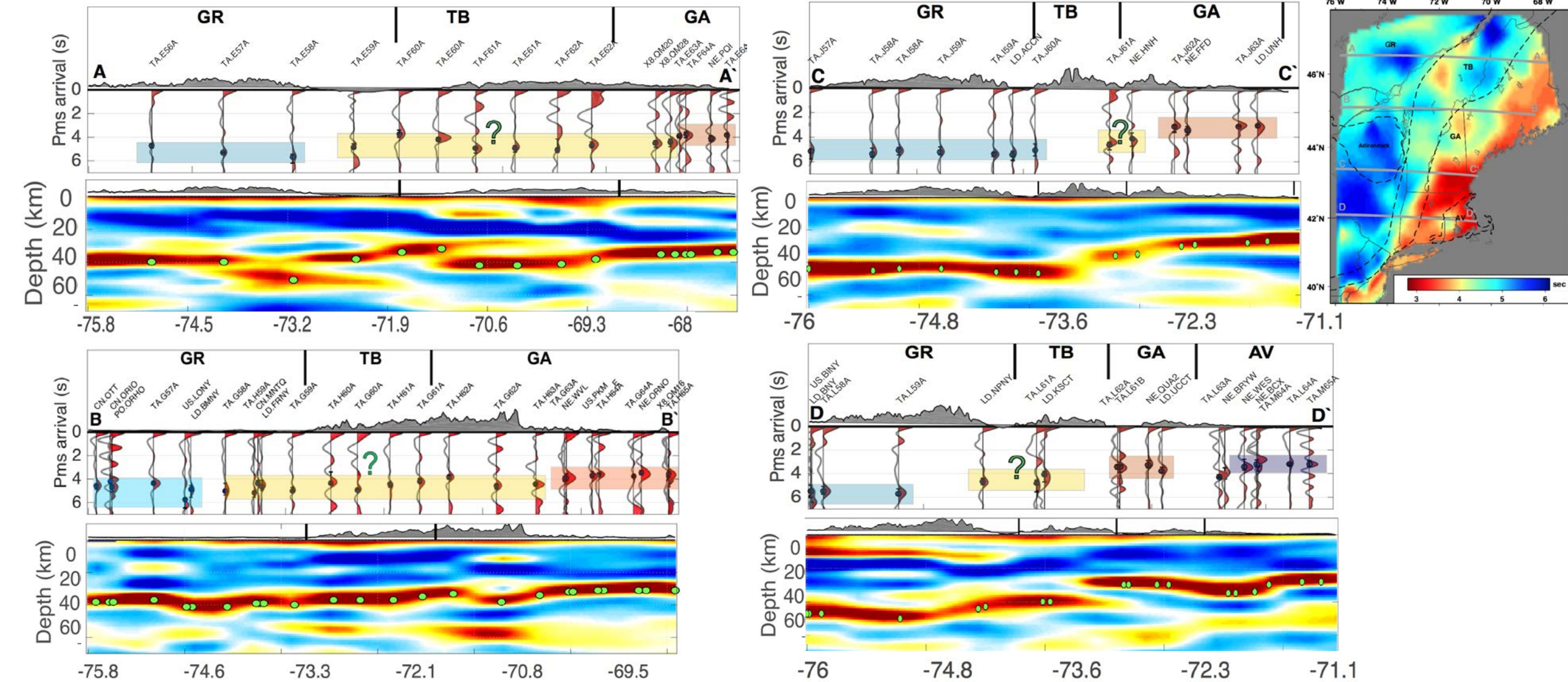
Examples of RFs



Correlations between P_m s Arrivals, Gravity and Terranes



UMassAmherst



**Session Number and Title: T11A: Eastern North American
Margin: Multidisciplinary Studies Posters**

**Session Date and Time: Monday, 11 December 2017; 08:00 -
12:20**

Final Abstract Number: T11A-0434