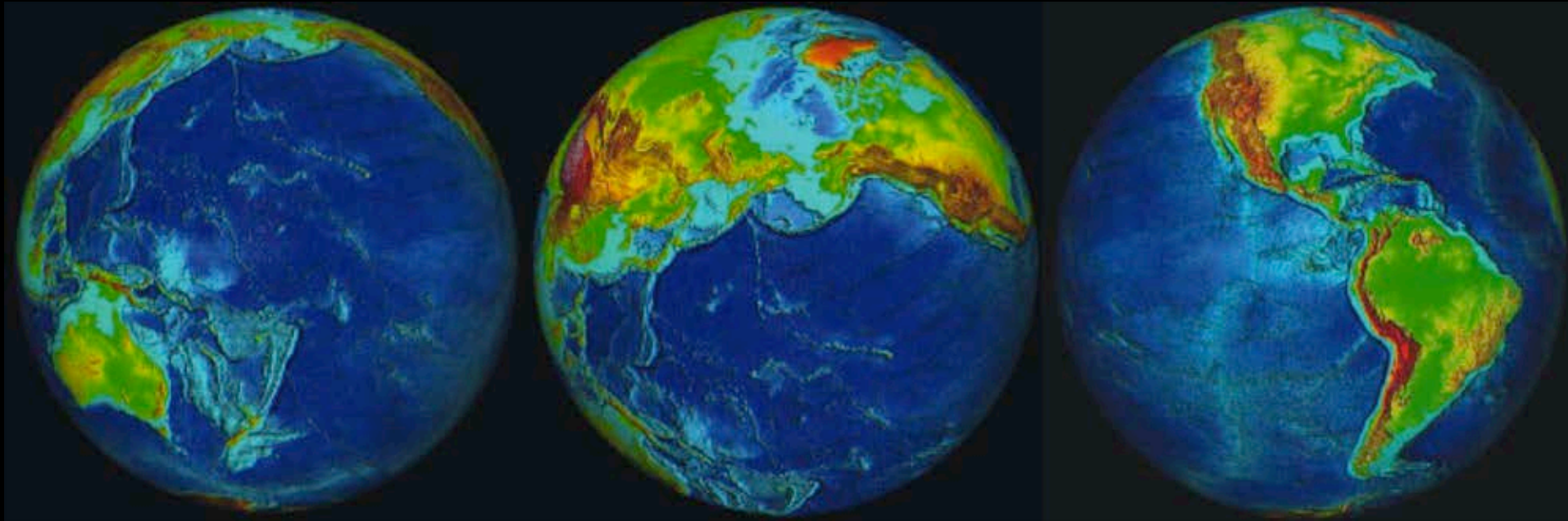


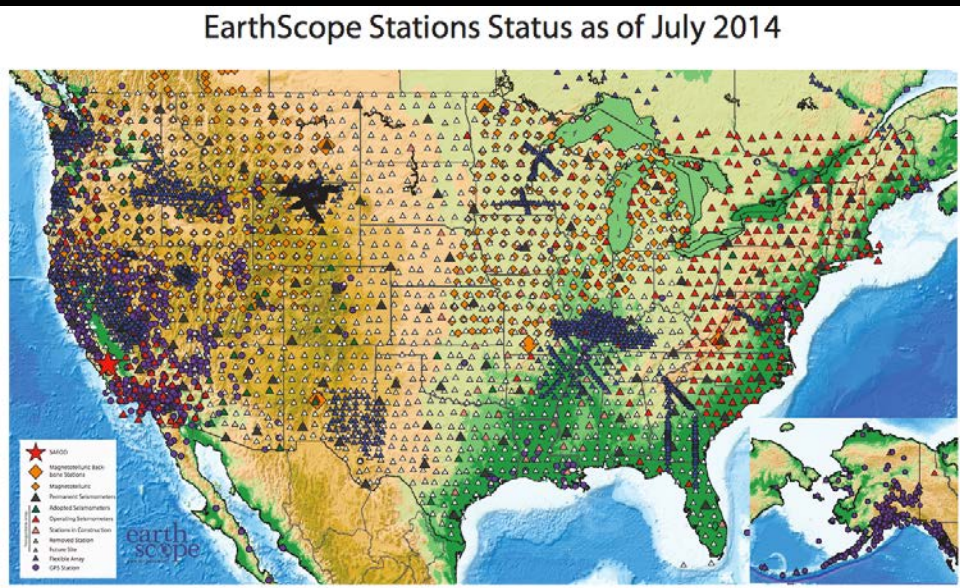
Subduction Zone Observatories

*Multi-disciplinary observatories along
subduction zone plate boundaries*

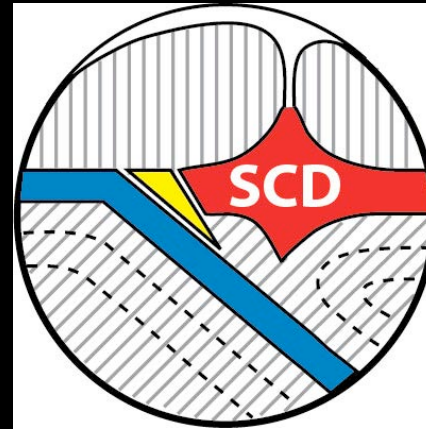


Subduction Zone Observatories

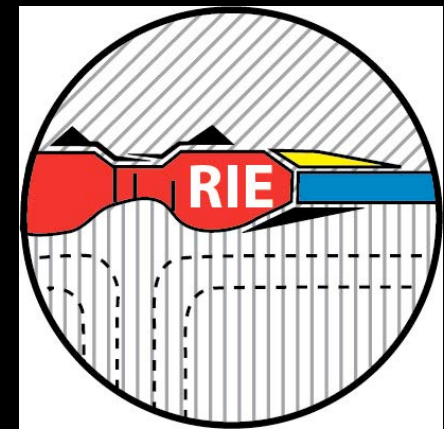
EarthScope Stations Status as of July 2014



Earthscope (until 2018)



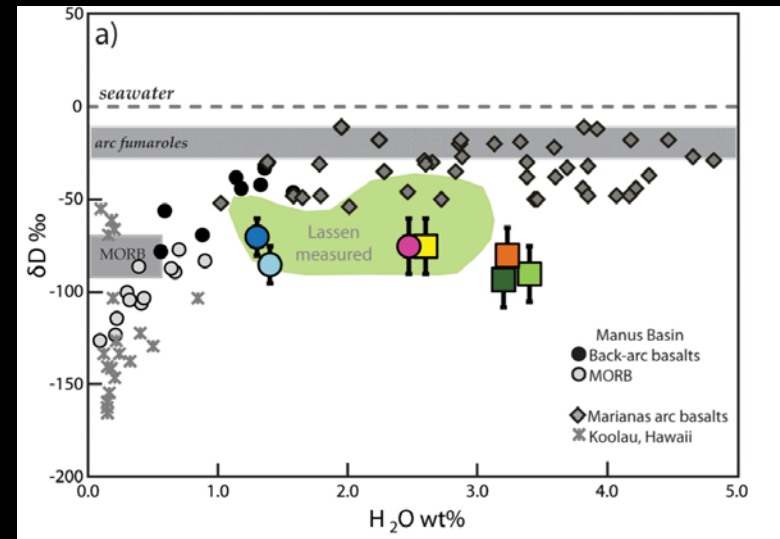
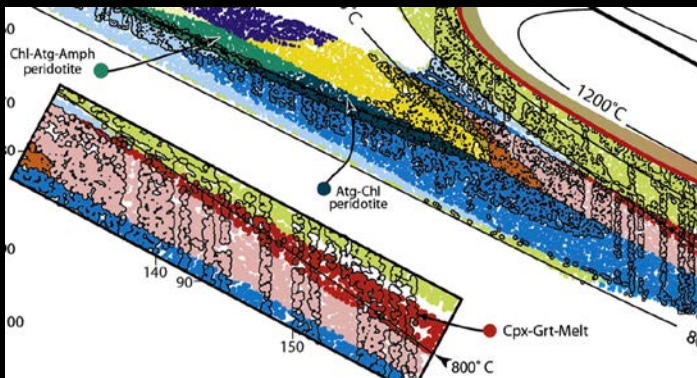
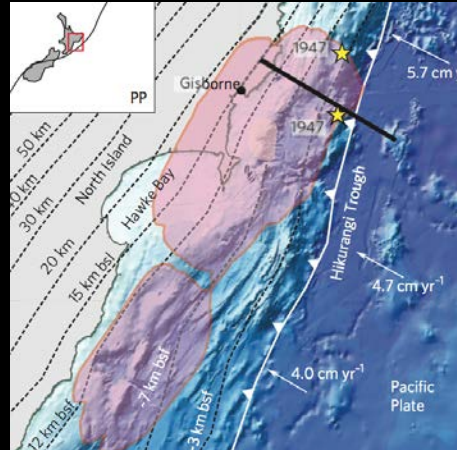
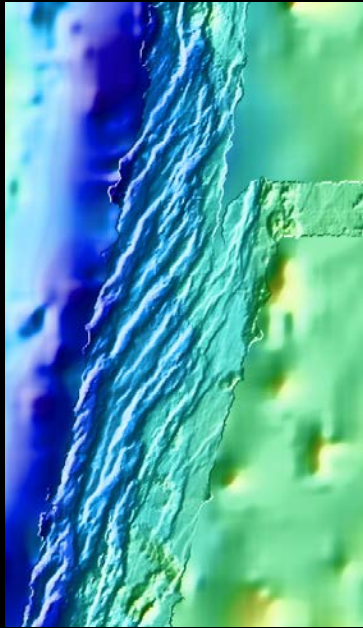
GeoPRISMS (until 2021)



IRIS • UNAVCO • USGS • GeoPRISMS • International Partners • You

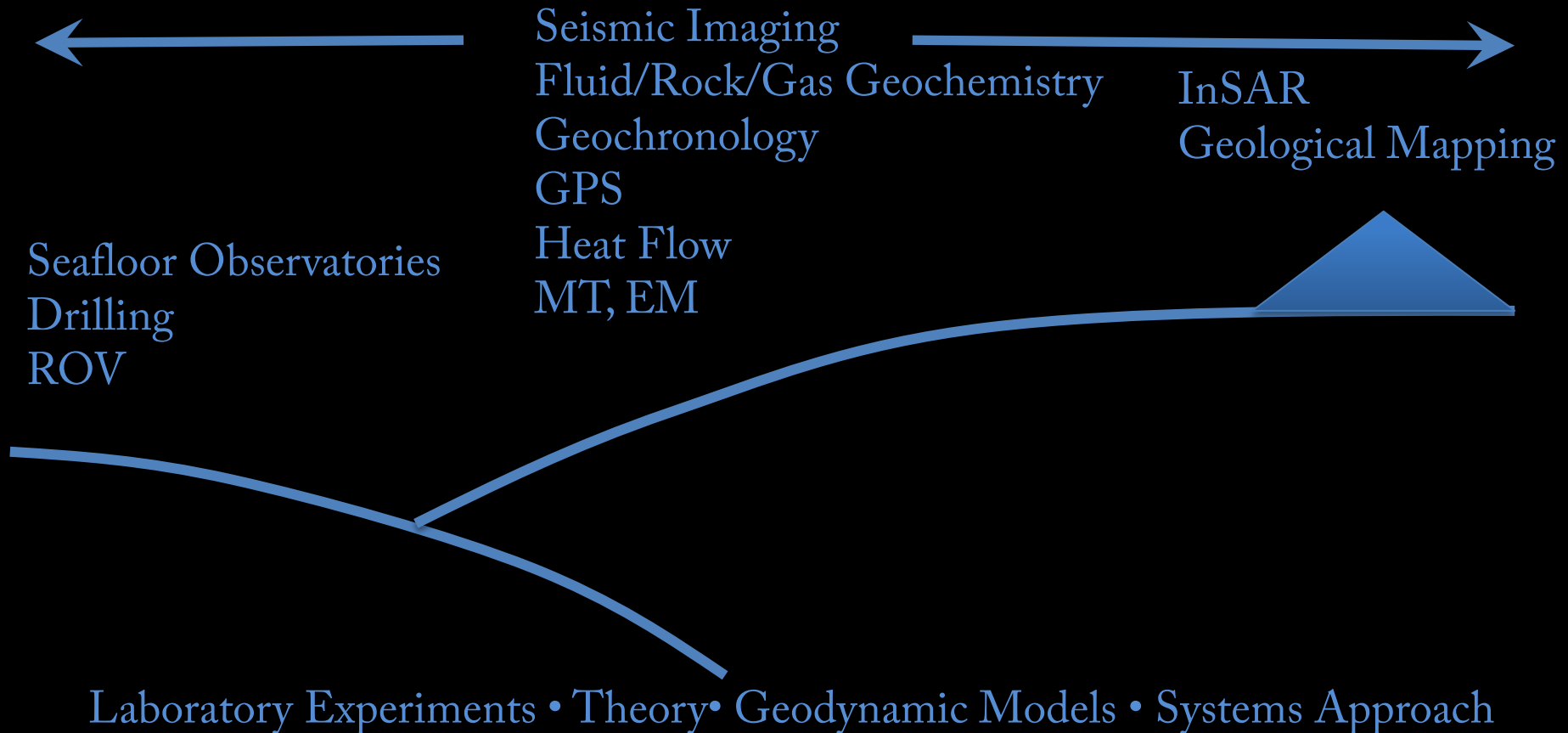
Subduction Zone Observatories

Multi-disciplinary approach to solving major scientific challenges



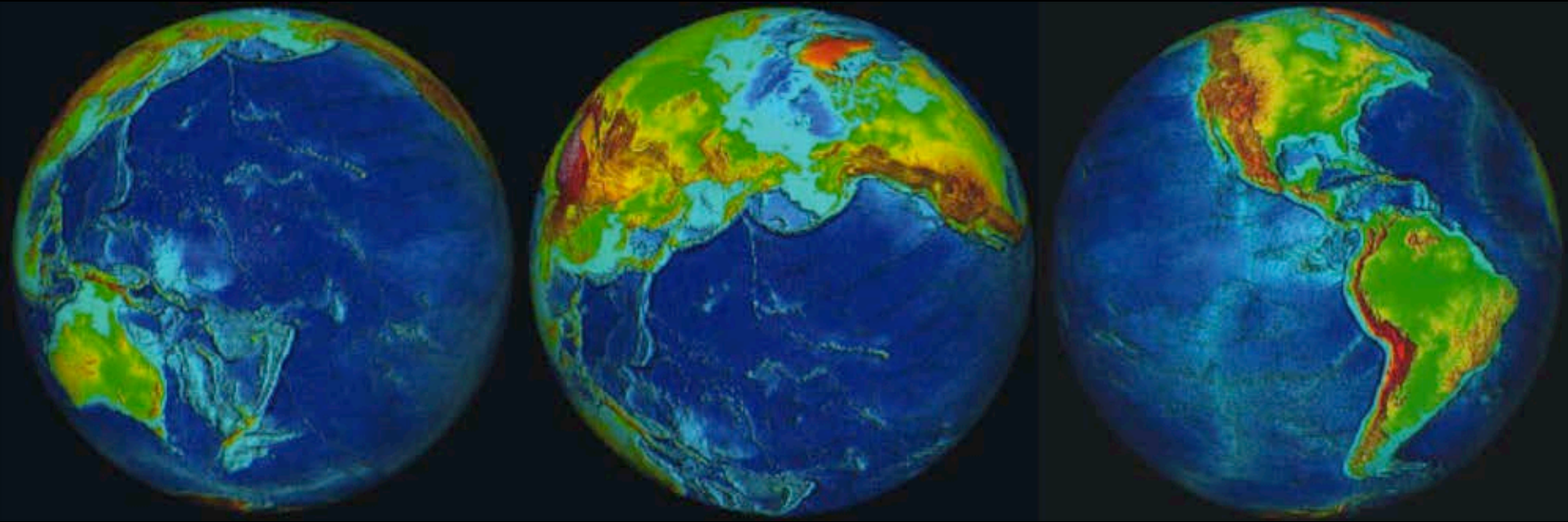
Subduction Zone Observatories

*Observing the Entire System Across-Margin:
From the Bending Plate to the Volcano*



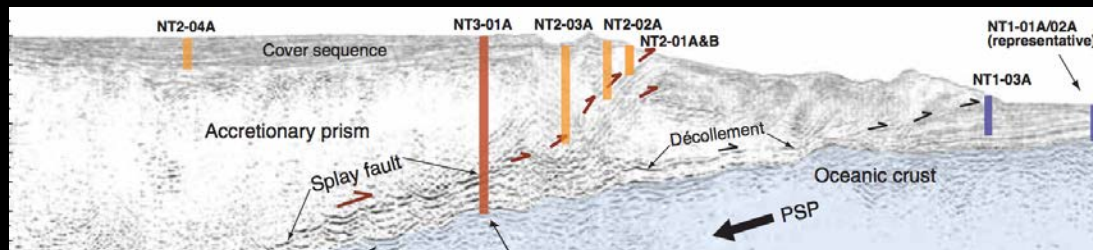
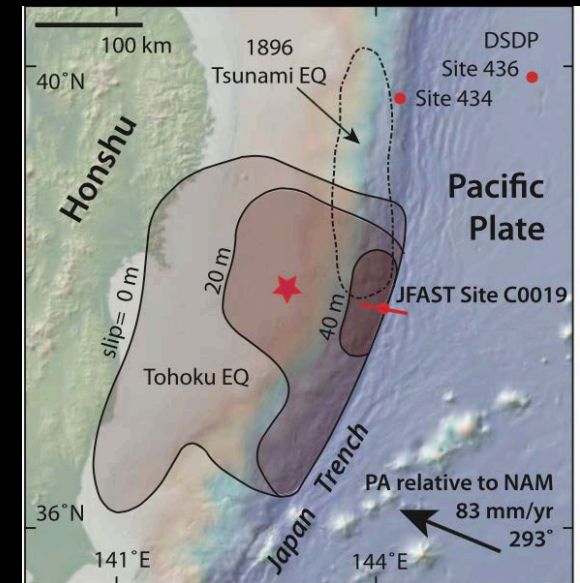
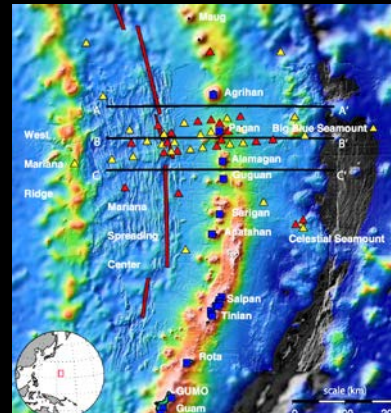
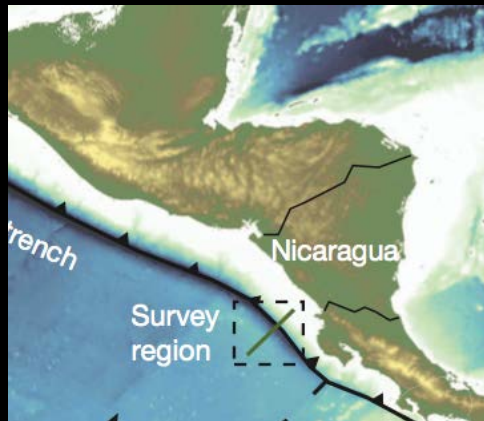
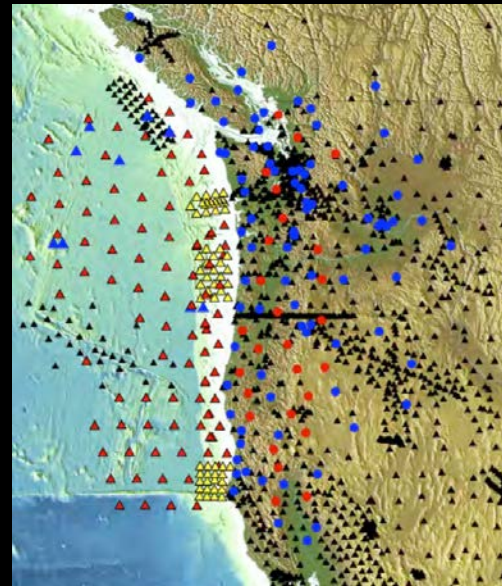
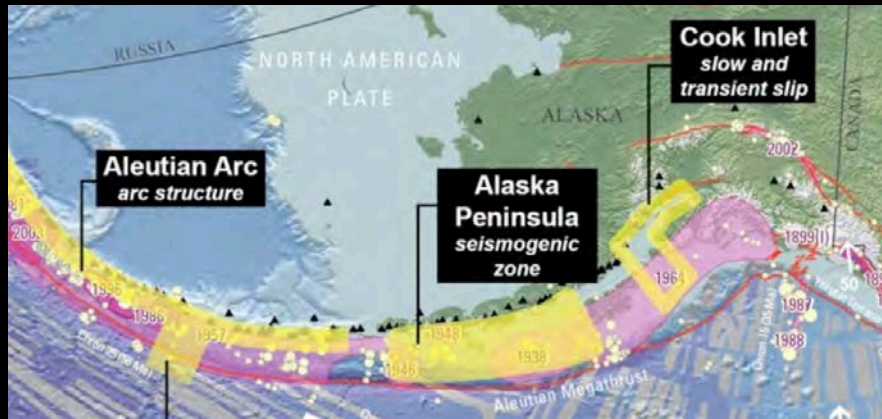
Subduction Zone Observatories

Structured, multi-disciplinary observatories around the Pacific



- Entire Pacific Rim?
- Americas?
- Alaska?

Existing Regions of Focus



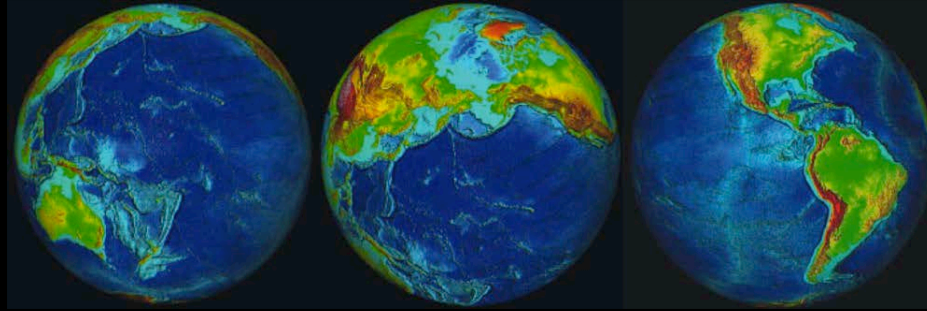
Related on-going initiatives and activities

- Cascadia Initiative – US, Canada, and Japan
- Neptune/Canada and OOI cabled observatories
- Alaska EarthScope - US
- GeoPrisms – US and international
- International Ocean Drilling Program
- IPOC – GFZ, IGP Paris, Chile, Caltech
- COCONet – Geodesy in Caribbean/central America
- JAMSTEC & ERI - Japan
- Earth Observatory of Singapore
- Many more...

Important Questions that need Your Input

- What are the major scientific and geographic targets?
- What is needed to solve the big science problems?
 - greatly improved observational systems
 - better synergies across disciplines
- Should there be a longer term plan to start developing a more ambitious program?
- Who are the partners, both nationally and internationally?

Subduction Zone Observatories



Upcoming Discussion Opportunities

- December 2015: AGU Town Hall, Monday Lunch
- April 2016: Planned International Workshop –
to develop science and facility plan

Mailing list: <http://www.iris.washington.edu/mailman/listinfo/szo>

Website: <http://www.iris.edu/hq/szo>