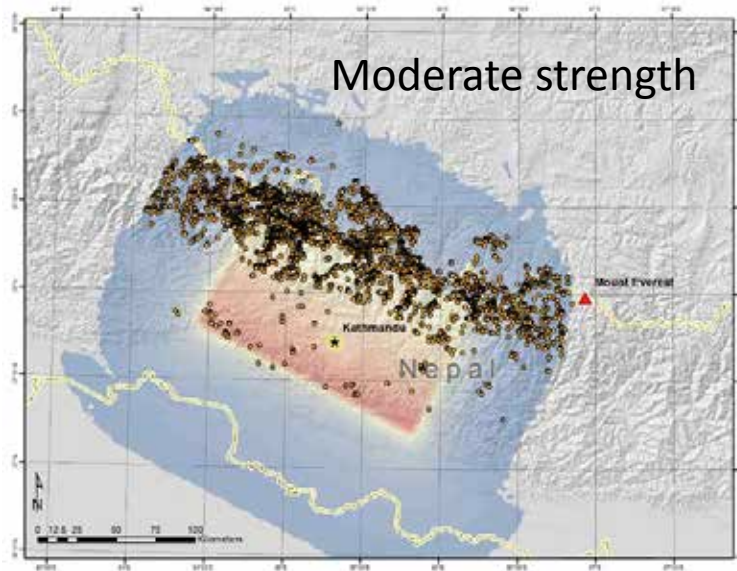
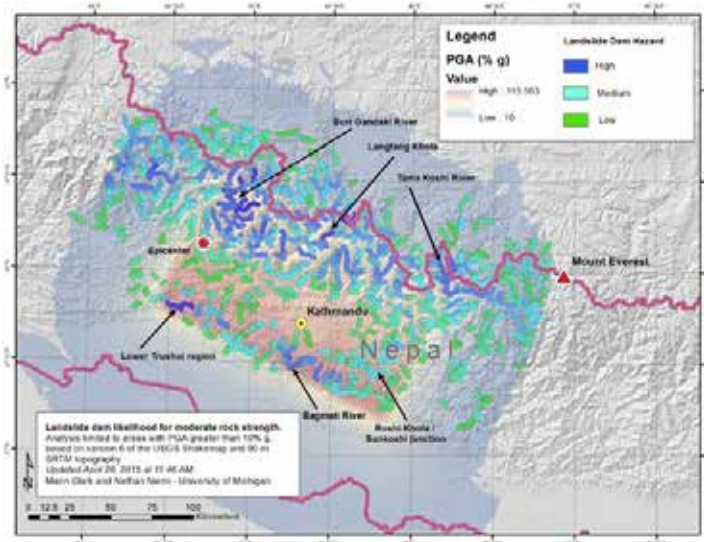


# Immediate response maps



Maps helped focus early scientific investigation and aided in decision making for rapid-response and recovery efforts.

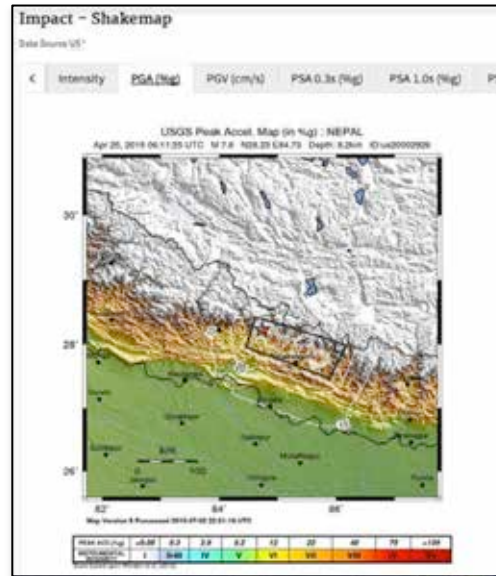


# Earthquakes as natural experiments of geomorphic forcing

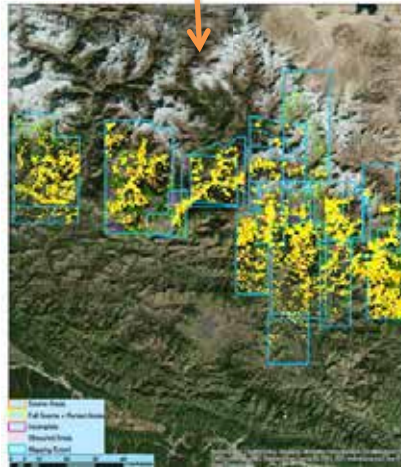
Topography (slope)



Strong ground motion (PGA)



Rock strength

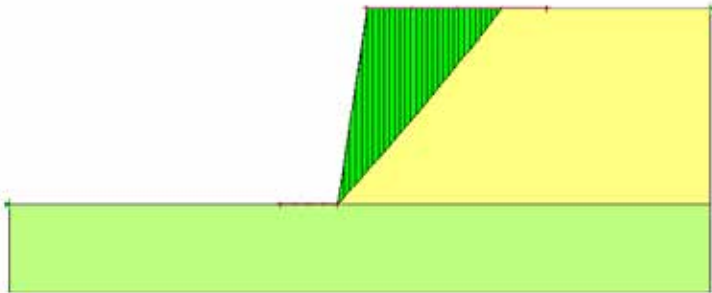


Landslide distribution

# Slope Stability Analyses

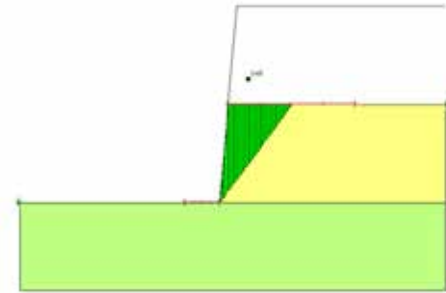
TERRACE 1

failed



TERRACE 2

stable



The back-calculation of terraces indicate significantly higher PGA at the study area than predicted by the USGS Shake Model